

# 360 DEGREE CARE CHECK

For Every Phase Of

# HER LIFE





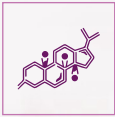









## HER CHECK✓ Series

Extensive range of packages for Women's Reproductive Health Issues





# INDEX

	<b>PCOS</b> PCOS Mini PCOS Basic PCOS Advanced	04
	<b>INFERTILITY</b> Infertility Basic Infertility Advanced Infertility - Extended	05
	<b>STEROID HORMONES</b> Steroid Profile	06
	<b>CANCER SCREENING</b> Women Cancer Screening Panel - Basic Women Cancer Screening Panel - Advanced	07
	<b>STD</b> STD Profile - Basic STD Profile - Advanced STD Profile - Extended	08
	<b>MATERNAL MARKERS</b> Double Marker - First Trimester Triple Marker - Second Trimester Quadruple Marker - Second Trimester	09
	<b>TORCH</b> TORCH Panel - IgG TORCH Panel - IgM TORCH All Eight TORCH All Ten	10
	<b>ANTENATAL CARE</b> Antenatal Profile - Basic Antenatal Profile - Advanced Antenatal Profile Extended	11
	<b>PREECLAMPSIA</b> Preeclampsia Profile Basic Preeclampsia Profile Advanced	12
	<b>NEWBORN SCREENING</b> Newborn Screening Profile Newborn Screening - 4	13
	<b>POSTPARTUM</b> Postpartum Health Checkup - Basic Postpartum Health Checkup - Advanced	14
	<b>NIPT</b> Non-Invasive Prenatal Testing (NIPT) NIPT Microdeletion - Advanced	15

# Living with PCOS is Difficult Manage it Better with Accurate Diagnosis



Abdominal  
Pain



Mood  
Swings



Acne



Abdominal  
Weight Gain



**1 in 5 Indian Adolescent Girls  
suffers from PCOS**

## Highlights

- ▶ Multiple markers assessed
- ▶ Fully automated systems that reduce the risk of human error
- ▶ Includes Quantitative insulin-sensitivity index and HOMA IR tests
- ▶ High sensitivity and specificity

### PCOS Mini (47 Parameters)

**@ ₹ 2500/-**

- ▶ Lipid Profile\* (10)
- ▶ Free Testosterone
- ▶ Estradiol/Oestrogen (E2)
- ▶ HbA1c
- ▶ Average Blood Glucose
- ▶ Fasting Blood Sugar
- ▶ Follicle Stimulating Hormone (FSH)
- ▶ Luteinising Hormone (LH)
- ▶ Prolactin (PRL)
- ▶ Insulin - Fasting
- ▶ Ultrasensitive TSH [UTSH]
- ▶ DHEA - Sulphate (DHEAS)
- ▶ HOMA Insulin Resistance
- ▶ Quantitative Insulin Sensitivity Index
- ▶ CBC (24)

### PCOS Basic (66 Parameters)

**@ ₹ 3500/-**

#### PCOS Mini (47 Parameters)



- ▶ Liver Profile (12)
- ▶ 17 OH Progesterone
- ▶ Creatinine - Serum
- ▶ Blood Urea Nitrogen (BUN)
- ▶ BUN/ Serum Creatinine Ratio
- ▶ Testosterone
- ▶ Uric Acid
- ▶ Est. Glomerular Filtration Rate<sup>#</sup> (eGFR)

### PCOS Advanced (70 Parameters)

**@ ₹ 4500/-**

#### PCOS Basic (66 Parameters)



- ▶ Anti Mullerian Hormone (AMH)
- ▶ Dihydrotestosterone (DHT)
- ▶ Sex Hormone Binding Globulin (SHBG)
- ▶ Free Androgen Index

<sup>\*</sup>10-12 hours of fasting is essential / <sup>#</sup>eGFR applicable above 18 years of age.

Technology : Photometry, Hematology, ELISA, C.M.I.A, H.P.L.C, C.L.I.A, E.C.L.I.A



Sample - 10 ml blood



TAT - Reports within 24 hours of samples reaching our lab

**Thyrocare**

Tests you can trust



# Having Trouble Conceiving? Detect the Cause



**1 in 6 Couples in India  
suffer from Infertility**

## Testing Helps

- ▶ Assess menopausal status
- ▶ Assess ovarian reserve
- ▶ Predict the outcome of in vitro fertilization

## Highlights

- ▶ Includes LCMS-based evaluation of Steroids Panel (consisting 11 hormones) and Vitamin D profile.
- ▶ LCMS is far more sensitive than other technologies and provides accurate and robust results.

### Infertility Basic (7 Parameters)

@ ₹ 2200/-

- ▶ Follicle Stimulating Hormone (FSH)
- ▶ Luteinising Hormone (LH)
- ▶ Prolactin (PRL)
- ▶ Anti Mullerian Hormone (AMH)
- ▶ Ultrasensitive TSH [UTSH]
- ▶ Total Triiodothyronine (T3)
- ▶ Total Thyroxine (T4)

### Infertility Advanced (21 Parameters)

@ ₹ 4000/-

- Infertility Basic**  
(7 Parameters)  
+
- ▶ **Steroid Profile [11]**
    - Aldosterone
    - Androstenedione
    - 17-Hydroxyprogesterone
    - Cortisol
    - Corticosterone
    - Deoxycortisol
    - Dehydroepiandrosterone (DHEA)
    - DHEA - Sulphate (DHEAS)
    - Estradiol
    - Progesterone
    - Testosterone
  - ▶ **Vitamin D Profile [3]**
    - Vitamin D Total
    - Vitamin D2
    - Vitamin D3

### Infertility - Extended (29 Parameters)

@ ₹ 4500/-

- Infertility Advanced**  
(21 Parameters)  
+
- ▶ **Sex Hormone Binding Globulin (SHBG)**
  - ▶ **Free Testosterone**
  - ▶ **Free Androgen Index**
  - ▶ **Diabetes Profile (3)**
    - HbA1c
    - Fasting Blood Sugar (FBS)
    - Post Prandial Blood Sugar (PPBS)
  - ▶ **Vitamin B12**
  - ▶ **Folic Acid**

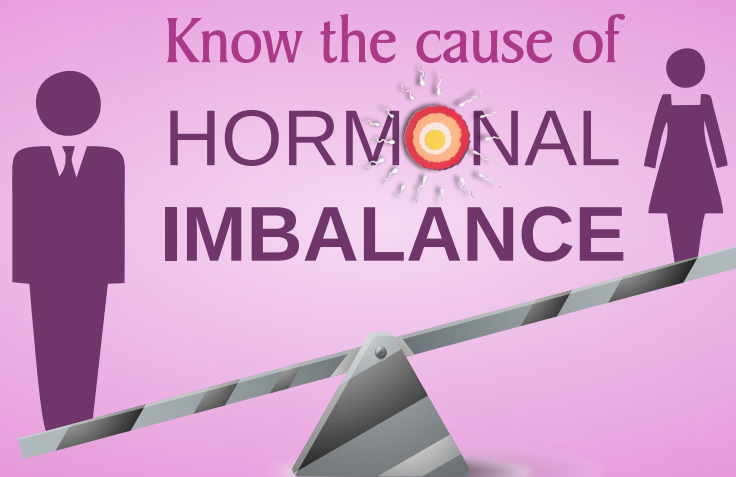
Technology : C.L.I.A, C.M.I.A, ELISA, LC-MS/MS, E.C.L.I.A



Sample - 5 - 10 ml blood



TAT - Reports within 12 hours of samples reaching our lab



**27.5 million couples** in India suffer from **Infertility**

**Determine the levels of steroid hormones in men and women**

### Testing helps

- ▶ Determine infertility
- ▶ Assess conditions involving sexual dysfunction
- ▶ Monitor menstrual cycle irregularities
- ▶ Monitor mixed sexual characteristics

### Highlight

Includes LCMS-based evaluation of Steroids Panel (consisting 9 hormones) and Vitamin D profile. LCMS is far more sensitive than other technologies and provides accurate and robust results.

### Steroid Profile (14 Parameters)

**@ ₹ 3000/-**

#### ▶ Steroid Profile [11]

17-Hydroxyprogesterone  
Aldosterone  
Androstenedione  
Cortisol  
Corticosterone  
Deoxycortisol  
Dehydroepiandrosterone (DHEA)

DHEA - Sulphate (DHEAS)  
Estradiol  
Progesterone  
Testosterone

#### ▶ Vitamin D Profile [3]

Vitamin D Total  
Vitamin D2  
Vitamin D3

Technology : **LC-MS/MS**



Sample - 5 ml blood



TAT - Reports within 24 hours of samples reaching our lab

We  
**CAN-CER**tainly  
Beat It



**1 in 9 Indians** are likely to develop  
**Cancer** in their lifetime.

### Testing Helps

- ▶ Detect cancer early
- ▶ Monitor cancer spread and treatment response

### Highlights

- ▶ Multiple markers assessed
- ▶ Budget-friendly packages

#### Women Cancer Screening Panel - Basic (6 Parameters)

**@ ₹ 2000/-**

- ▶ Alpha Feto Protein (AFP)
- ▶ Beta HCG
- ▶ CA-125
- ▶ CA 15.3
- ▶ CA 19.9
- ▶ Carcino Embryonic Antigen (CEA)

#### Women Cancer Screening Panel - Advanced (11 Parameters)

**@ ₹ 6000/-**

#### Women Cancer Screening Panel - Basic (6 Parameters)

**+**

- ▶ Lactate Dehydrogenase (LDH)
- ▶ Thyroglobulin
- ▶ Chromogranin A
- ▶ Human Epididymis protein (HE4)
- ▶ ROMA

Technology : C.L.I.A, C.M.I.A, ELISA



Sample - 5 ml blood



TAT - Reports within 12 hours of samples reaching our lab



# Untreated **STDs** can be life-threatening. **Protect yourself and your partner**



**30-35 million cases of STDs in India occur every year and rising.**

## Highlights

- ▶ Includes tests for detecting Chlamydia, Herpes, Hepatitis, HIV, Syphilis and other common sexually transmitted infections
- ▶ Uses highly sensitive and cutting-edge technologies for faster and reliable results

### STD Profile - Basic (12 Parameters)

**@ ₹ 2500/-**

- ▶ Anti Hepatitis C Virus Antibody (Anti HCV) - Total
- ▶ Anti Chlamydia Antibody IgG
- ▶ Anti Chlamydia Antibody IgM
- ▶ HIV I & II<sup>#</sup>
- ▶ Herpes Simplex Virus I (HSV) - IgG
- ▶ Herpes Simplex Virus I (HSV) - IgM
- ▶ Herpes Simplex Virus II (HSV) - IgG
- ▶ Herpes Simplex Virus II (HSV) - IgM
- ▶ Hepatitis B Surface Antigen (HBsAg)
- ▶ Treponema Pallidum Antibody (TPAB)
- ▶ Treponema Pallidum Haemagglutination (TPHA)
- ▶ VDRL (RPR) For Syphilis

### STD Profile - Advanced (12 Parameters)

**@ ₹ 5800/-**

- ▶ Anti Hepatitis C Virus Antibody (Anti HCV) - Total
- ▶ Chlamydia trachomatis (CT) (PCR)
- ▶ HIV I & II<sup>#</sup>
- ▶ Herpes Simplex Virus I (HSV) - IgG
- ▶ Herpes Simplex Virus I (HSV) - IgM
- ▶ Herpes Simplex Virus II (HSV) - IgG
- ▶ Herpes Simplex Virus II (HSV) - IgM
- ▶ Hepatitis B Surface Antigen (HBsAg)
- ▶ Neisseria gonorrhoea (NG) (PCR)
- ▶ Treponema Pallidum Antibody (TPAB)
- ▶ Treponema Pallidum Haemagglutination (TPHA)
- ▶ VDRL (RPR) For Syphilis

### STD Profile - Extended (14 Parameters)

**@ ₹ 8500/-**

- ▶ Anti Hepatitis C Virus Antibody (Anti HCV) - Total
- ▶ Chlamydia trachomatis (CT) (PCR)
- ▶ HIV I & II<sup>#</sup>
- ▶ Herpes Simplex Virus I (HSV) - IgG
- ▶ Herpes Simplex Virus I (HSV) - IgM
- ▶ Herpes Simplex Virus II (HSV) - IgG
- ▶ Herpes Simplex Virus II (HSV) - IgM
- ▶ Hepatitis B Surface Antigen (HBsAg)
- ▶ Mycoplasma genitalium (MG) (PCR)
- ▶ Neisseria gonorrhoea (NG) (PCR)
- ▶ Treponema Pallidum Antibody (TPAB)
- ▶ Treponema Pallidum Haemagglutination (TPHA)
- ▶ Trichomonas vaginalis (TV) (PCR)
- ▶ VDRL (RPR) For Syphilis

<sup>#</sup>HIV test needs pretest counseling forms filled and signed by a medical practitioner

**Technology : ELISA, C.M.I.A, PCR**



Sample - 5 ml blood, first morning urine sample (15 ml)



TAT - Reports within 24 hours of samples reaching our lab

**Thyrocare**  
Tests you can trust

## Screen the unborn child for Genetic Abnormalities



Every year, over 17 lakh children in India are born with birth defects

### Assesses Risk For

- ▶ Down Syndrome
- ▶ Edwards Syndrome
- ▶ Patau Syndrome
- ▶ Neural Tube Defects [Second trimester]

### Highlights

- ▶ No risk to the mother or unborn child
- ▶ Detection rate: Up to 95%
- ▶ Analysed using Prisca 5.0 Software

### Profiles

#### Double Marker - First Trimester (2 Parameters)

- ▶ Free Beta HCG
- ▶ Pregnancy Associated Plasma Protein A (PAPPA)

@ ₹ 2200/-

#### Triple Marker - Second Trimester (3 Parameters)

- ▶ Beta HCG
- ▶ Unconjugated Estriol (E3)
- ▶ Alpha Feto Protein (AFP)

@ ₹ 2700/-

#### Quadruple Marker - Second Trimester (4 Parameters)

- ▶ Beta HCG
- ▶ Unconjugated Estriol (E3)
- ▶ Inhibin A
- ▶ Alpha Feto Protein (AFP)

@ ₹ 2900/-

### Recommended During

9-13 weeks

15-20 weeks

15-22 weeks



TRF and USG report is mandatory to generate a risk factor graph

Technology : C.M.I.A, C.L.I.A



Sample - 5 ml blood



TAT - Reports within 12 hours of samples reaching our lab

# Protect your child from TORCH infections



**About 2-3% of all congenital abnormalities are caused by TORCH infections**

## TORCH infections can cause

- ▶ Birth Defects
- ▶ Premature Birth
- ▶ Miscarriage
- ▶ Stillbirth

## Highlights

- ▶ **Simple Blood Test**
- ▶ **No risk** to the mother or unborn child
- ▶ **100%** sensitive and specific kits + reliable **fully-automated** lab tests

### TORCH Panel - IgG (05 Parameters)

- Cytomegalovirus (CMV) - IgG
- Herpes Simplex Virus I (HSV) - IgG
- Herpes Simplex Virus II (HSV) - IgG
- Rubella - IgG
- *Toxoplasma gondii* - IgG

**@ ₹ 1,400/-**

### TORCH Panel - IgM (05 Parameters)

- Cytomegalovirus (CMV) - IgM
- Herpes Simplex Virus I (HSV) - IgM
- Herpes Simplex Virus II (HSV) - IgM
- Rubella - IgM
- *Toxoplasma gondii* - IgM

**@ ₹ 1,400/-**

### TORCH All Eight (08 Parameters)

- Cytomegalovirus (CMV) - IgG
- Cytomegalovirus (CMV) - IgM
- Herpes Simplex Virus (HSV) - IgG
- Herpes Simplex Virus (HSV) - IgM
- Rubella - IgG
- Rubella - IgM
- *Toxoplasma gondii* - IgG
- *Toxoplasma gondii* - IgM

**@ ₹ 2,000/-**

### TORCH All Ten (10 Parameters)

**TORCH Panel IgG  
(05 Parameters)**

**+**

**TORCH Panel IgM  
(05 Parameters)**

**@ ₹ 2,200/-**

Technology : **ELISA, C.M.I.A**



Sample - 5 ml blood



TAT - Reports within 12 hours of samples reaching our lab



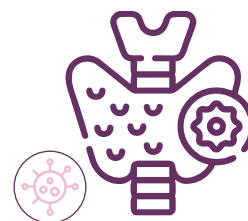
## Monitor the health of the mother and growing baby



**20%–30% of pregnancies in India are at high risk of developing complications**

### Highlights

- ▶ Assesses thyroid functions and detects infections
- ▶ Includes vitamin B12, folate, iron, urine analysis and anticoagulant tests
- ▶ Accurate and reliable results
- ▶ Quick and easy processing
- ▶ Uses advanced and sensitive technologies for reliable results



#### Antenatal Profile - Basic (31 Parameters)

**@ ₹ 1500/-**

- ▶ Thyroid Profile (3)
- ▶ CBC (24)
- ▶ HIV I & II\*
- ▶ Hepatitis B Surface Antigen (HBsAg)
- ▶ VDRL (RPR) For Syphilis
- ▶ Anti Hepatitis C Virus Antibody (Anti HCV) - Total

#### Antenatal Profile - Advanced (46 Parameters)

**@ ₹ 2500/-**

##### Antenatal Profile - Basic (31 Parameters)

+

- ▶ Blood Group
- ▶ Rh Testing
- ▶ Hemoglobin Variants (5)
- ▶ HbA1c
- ▶ Fasting Blood Sugar (Glucose)
- ▶ Vitamin B12
- ▶ Folate
- ▶ Iron Deficiency Profile (4)

#### Antenatal Profile Extended (80 Parameters)

**@ ₹ 7500/-**

##### Antenatal Profile - Advanced (46 Parameters)

+

- ▶ Toxoplasma gondii - IgG
- ▶ Rubella - IgG
- ▶ Cytomegalo Virus (CMV) - IgG
- ▶ Herpes Simplex Virus I (HSV) - IgG
- ▶ Herpes Simplex Virus II (HSV) - IgG
- ▶ Complete Urine Analysis (24)
- ▶ 25-OH Vitamin D (Total)
- ▶ Cardiolipin Antibody (ACL) - IgG
- ▶ Anti Phospholipid Antibody (APL) - IgG
- ▶ Antithrombin III
- ▶ Homocysteine

*\*HIV test needs pretest counseling forms filled and signed by a medical practitioner*

### Technology

Hematology, Immunoassay, Flocculation, C.L.I.A, C.M.I.A, LC-MS/MS, HPLC, Agglutination, Photometry



Sample - 8 ml blood, first morning urine sample (15 ml)



TAT - Reports within 12 hours of samples reaching our lab

**Thyrocare**  
Tests you can trust

A silent danger for the mother and baby

Get tested to beat it in time

for a Healthy pregnancy

Up to **15% of Pregnant Women** suffer from preeclampsia in India

### Highlights

- ▶ Preeclampsia is a pregnancy disorder that causes high blood pressure, proteinuria and damage to other organs
- ▶ Health checkup for pregnant ladies during the 2<sup>nd</sup> and 3<sup>rd</sup> trimester
- ▶ Blood & urine marker tests to predict probability of preeclampsia
- ▶ Includes sFLT1 & PIGF markers that help in formation of new blood vessels.
- ▶ A high sFLT1:PIGF, ratio coupled with other medical conditions & comorbidities, indicates possibility of preeclampsia and eclampsia during pregnancy

### Preeclampsia Profile Basic

(30 Parameters)

@ ₹ 3000/-

- sFLT1
- PIGF
- sFLT1: PIGF ratio
- Alanine Transaminase (SGPT)
- Aspartate Aminotransferase (SGOT)
- Serum Creatinine
- CBC (24)

### Preeclampsia Profile Advanced

(54 Parameters)

@ ₹ 3300/-

#### Preeclampsia Profile Basic (30 Parameters)

+

#### • Complete Urine Analysis (24)

Specific Gravity	Urinary Protein	Crystals
Urinary Bilirubin	Appearance	Bacteria
Urine Blood	Colour	Red Blood Cells
Urobilinogen	Microalbumin	Yeast
Urinary Glucose	Volume	Parasite
Urine Ketone	Bile Salt	Mucus
Urinary Leucocytes	Bile Pigment	
Nitrite	Epithelial Cells	
pH	Casts	

Technology : Photometry, Hematology, C.L.I.A, C.M.I.A, E.C.L.I.A



Sample - 8 ml Blood and first morning urine (15 ml)



TAT - Reports within 12 hours of samples reaching our lab

**Thyrocare**

Tests you can trust

# Ensuring a Healthy Start for a New Life

Early detection,  
lifelong protection



## Highlights

- ▶ A series of tests performed on a blood sample taken from baby's heel 24-48 hours after birth, conducted with the consent of the parents
- ▶ Diagnoses genetic, metabolic and congenital disorders, e.g., phenylketonuria (PKU), congenital hypothyroidism and cystic fibrosis
- ▶ A part of newborn care routine in many countries

## Newborn Screening - 4 (4 Parameters)

@ ₹ 1500/-

- ▶ Neonatal G6PD   ▶ Neonatal Total Galactose   ▶ Neonatal 17 Alpha-Hydroxyprogesterone   ▶ Thyroid Stimulating Hormone

## Newborn Screening Profile (43 Parameters)

@ ₹ 4000/-

### ▶ ELISA (7)

Neonatal Biotinidase  
Neonatal G6PD  
Neonatal Total Galactose  
Neonatal 17 Alpha-Hydroxyprogesterone  
Neonatal Immunoreactive Trypsin  
Neonatal Phenylketonuria  
Thyroid Stimulating Hormone

### ▶ LC-MS/MS (36)

Alanine  
Arginine  
Argininosuccinic Acid  
Citrulline  
Glycine  
Leucine

Methionine  
Ornithine  
Phenylalanine  
Tyrosine  
Valine  
3-Hydroxybutyryl-Carnitine (C4OH)  
3-Hydroxyhexadecanoyl-Carnitine (C16OH)  
3-Hydroxyhexadecanoyl-Carnitine (C16:1-OH)  
3-Hydroxyoctadecanoyl-Carnitine (C18-OH)  
3-Hydroxyoctadecanoyl-Carnitine (C18:1OH)  
3-OH Isovaleryl-2methyl-3-OH Butyryl-Carnitine (C5OH)  
Acetyl Carnitine (C2)  
Decanoyl-Carnitine (C10)  
Decanoyl-Carnitine (C10:1)  
Dodecanoyl-Carnitine (C12)  
Free Carnitine (C0)

Glutaryl-Carnitine (C5DC)  
Hexadecanoyl-(Palmitoyl)-Carnitine (C16)  
Hexanoyl-Carnitine (C6)  
Isobutyryl- Butyryl-Carnitine (C4)  
Isovaleryl-/2-Methylbutyryl-Carnitine (C5)  
Methylglutaryl Carnitine (C6DC)  
Octadecadienoyl-Carnitine (C18:2)  
Octadecanoyl-(Stearyl)-Carnitine (C18)  
Octadecenoyl-Carnitine (C18:1)  
Octanoyl-Carnitine (C8)  
Propionyl Carnitine (C3)  
Tetradecanoyl-(Myristoyl)-Carnitine (C14)  
Tetradecenoyl-Carnitine (C14:1)  
Tiglyl-Carnitine (C5:1)

Technology : ELISA, LC-MS/MS



TAT - Reports within 72 hours of samples reaching our lab



**Thyrocare**

Tests you can trust



# Heal, Recover, Bounce Back!

## Get Our Postpartum Health Checkup Profiles

### Post pregnancy complications



Excessive  
bleeding



Infections



Sepsis



Urinary  
Incontinence  
or constipation



Breast  
pain



Postpartum  
depression

### Introducing,

Packages that offer complete care & facilitate a smooth transition to a healthy lifestyle for New Moms.

### Highlights

- General health checkup tests for new mothers
- Can be performed multiple times at regular intervals up to 6 months
- Helps understand the body's response to hormonal changes post pregnancy
- Track return to regular menstrual cycles
- Includes CBC, diabetes profile, lipid profile, liver function, vitamins and hormone tests
- Steroids, iron deficiency tests & minerals in advanced profile

#### Postpartum Health Checkup - Basic (47 Parameters)

@ ₹ 1500/-

- **Liver Profile (3)**
  - Serum Albumin
  - Serum Globulin
  - Protein Total
- **Lipid Profile\* (10)**
  - Total Cholesterol
  - HDL Cholesterol - Direct
  - LDL Cholesterol - Direct
  - LDL/HDL Ratio
  - Non HDL Cholesterol
  - TC/HDL Cholesterol Ratio
  - Triglycerides
  - VLDL Cholesterol
  - HDL/LDL Ratio
  - TRIG/HDL Ratio
- **Hormone Profile (3)**
  - Luteinising Hormone (LH)
  - Follicle Stimulating Hormone (FSH)
  - Prolactin (PRL)
- **CBC (24)**
- **Diabetic Profile (2)**
  - Fasting Blood Sugar (Glucose)
  - Postprandial Blood Sugar (Glucose)
- **Thyroid Profile (2)**
  - Free Thyroxine (FT4)
  - Ultrasensitive TSH [UTSH]
- **Vitamin Profile (3)**
  - 25-OH Vitamin D Total
  - Folic Acid
  - Vitamin B12

#### Postpartum Health Checkup - Advanced (56 Parameters)

@ ₹ 2500/-

#### Postpartum Health Profile - Basic (47 Parameters)

+

- **Calcium**
- **Cortisol**
- **Estrogen**
- **Progesterone**
- **Iron Deficiency Profile (4)**
  - Total Iron Binding Capacity (TIBC)
  - % Transferrin Saturation
  - Iron
  - Unsat. Iron-Binding Capacity
- **Adrenocorticotrophic Hormone (ACTH)**

Technology : Photometry, Hematology, C.L.I.A, C.M.I.A, E.C.L.I.A

\*10-12 hours fasting required



Sample - 8 ml Blood



TAT - Reports within 12 hours of samples reaching our lab

**Thyrocare**

Tests you can trust

# Screen the unborn baby for chromosomal abnormalities

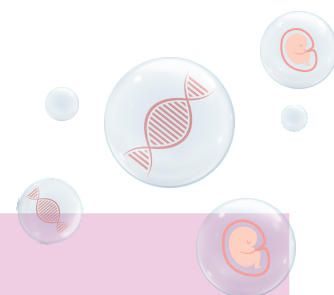


**6-7 out of 100 babies in India are born with Congenital Abnormalities**



## Highlights

- ▶ No risk to the mother or unborn child
- ▶ High sensitivity and specificity
- ▶ Performed from the 10<sup>th</sup> week of pregnancy



### Non-Invasive Prenatal Testing (NIPT)

**@ ₹ 12500/-**

Chromosomal abnormalities, such as

- ▶ Aneuploidies
- ▶ Down Syndrome
- ▶ Edwards Syndrome
- ▶ Patau Syndrome

### NIPT Microdeletion - Advanced

**@ ₹ 23000/-**

Abnormalities due to missing/deleted gene sequences of chromosomes, such as

- ▶ Williams-Beuren Syndrome
- ▶ Prader-Willi Syndrome

Technology: Next Generation Sequencing



Sample - 10 ml peripheral blood in Streak Tube



TAT - Reports within 15 days of samples reaching our lab

**Thyrocare**

Tests you can trust



Tests you can trust

Since 1996

To Avail Service